



ATENA S.p.A. HAS A QUALITY  
MANAGEMENT SYSTEM CERTIFIED  
BY RINA IN COMPLIANCE WITH  
ISO 9001

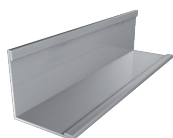
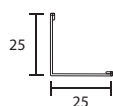
## METAL MODULAR WALL ANGLES RANGE

Atena S.p.A. offers a complete range of perimeter profiles that are normally provided with the same materials and finishing of the chosen tiles.

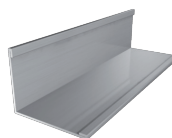
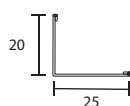
In addition to standard wall angles, ceiling perimeter closing can be realized using many other solutions such as metal and shaped plasterboard elements, lowered shutters and perforated, smooth or sublimated metal surfaces.

Atena wall angles have been subjected to static load tests by Istituto Giordano S.p.A. and certified according to the UNI EN 13964 standard.

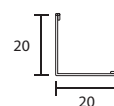
25X25 "L" PROFILE  
L=3050mm



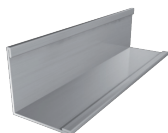
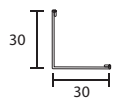
20X25 "L" PROFILE  
L=3050mm



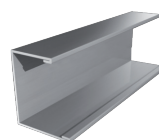
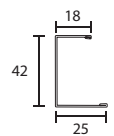
20X20 "L" PROFILE  
L=3050mm



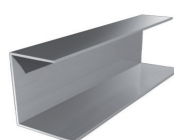
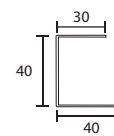
30x30 "L" PROFILE  
L=3050mm



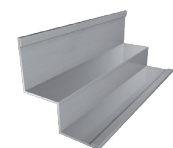
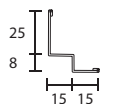
18x42x25 "C" PROFILE  
L=4000mm  
For T-grid systems



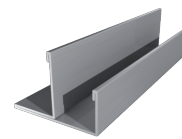
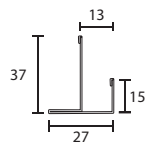
"C" PROFILE  
30x40x40 L=3000mm  
For B43



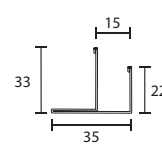
25X8X15X15 "Double L"  
L=3050 mm



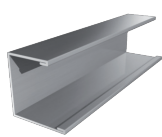
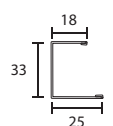
13 "F" PROFILE  
L=3000mm



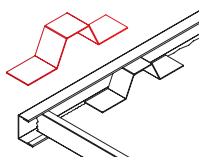
15 "F" PROFILE  
L=3000mm



18x33x25 "C" PROFILE L=4000mm  
For clip in systems

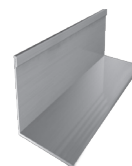


h30 Omega spring

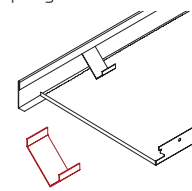


The use of an 'Omega spring' between 18x33x25 "C" profile and the tiles assures a firmly setting up of the system.

55x20 L=3000mm "L" PROFILE  
For TRIM model



"V" spring.



Atena suggests the use of a 'V' spring between 55x20 "L" profile and trim tiles.